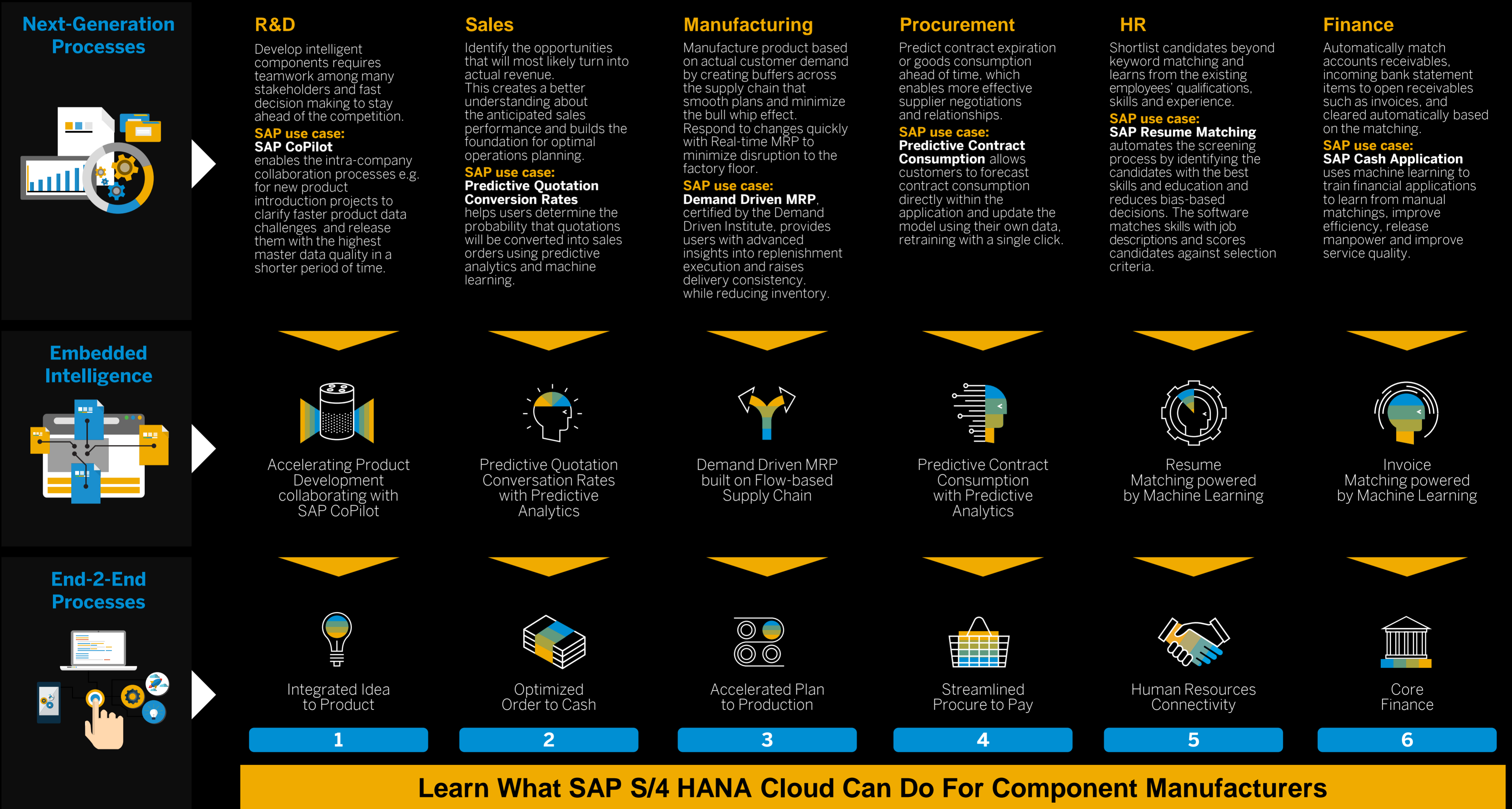


How Component Manufacturing Becomes Intelligent



Building an intelligent enterprise is the new reality for leaders of **Component Manufacturing Companies** that want to build a sustainable competitive advantage in the global digital economy by leveraging advanced technology.

Embedding **intelligent applications** across manufacturing and supply chain management processes creates new levels of insight, prediction, and efficiencies that enable superior customer experiences and delivery of orders on time, as promised, complete, every time.



An Intelligent Manufacturing system starts with a Single Source of Truth. Uniquely, this brings together a rock solid core of end-to-end transactions and analytics across all areas of manufacturing and supply chain management in a unified in-memory system.